



**MARINATOWERS®**

*Nautical High Life*

*The most anticipated beachfront  
development in Marina Vallarta*





# MARINATOWERS®

*Nautical High Life*



## AMENITIES

Paddle Courts  
Pickleball Courts  
Movie Theater  
Kids Playroom  
Lush Tropical Gardens  
Pet Park  
Yoga / Meditation Area  
Business Center / Coworking  
Pool Bars  
Games Rooms / Sports Bar  
Private Marina  
Yacht Club  
Beach Club  
Extensive Wine Cellar  
Fire Pits  
Solar Panels in Tower Roofs  
Special Events Location for  
Owners 4 High-Speed Elevators  
(One Large, One for Moving Purposes and Medical Emergency)



## SERVICES

Electric Water Taxis  
Electric Bikes  
Concierge 24/7  
24/7 Security and CCTV  
Tesla and Rivian Chargers  
Ocean-View Restaurant / Bar  
24/7 Medical Services on Site  
(Provided by SANMARÉ)





\*The developer reserves the right to modify colors, materials, features, amenities, floor plans, prices, conditions and services at any time with out notice.



\*The developer reserves the right to modify colors, materials, features, amenities, floor plans, prices, conditions and services at any time with out notice.

# GROUND LEVEL

## TYPE C



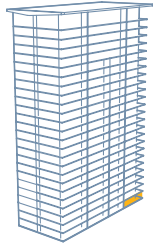
FR



293.71 m<sup>2</sup> | 3,161.468 ft<sup>2</sup>



\*The developer reserves the right to modify colors, materials, features, amenities, floor plans, prices, conditions and services at any time without notice. The areas of the apartments are taken along the axis of the wall between contiguous apartments, and the entire wall towards common areas.



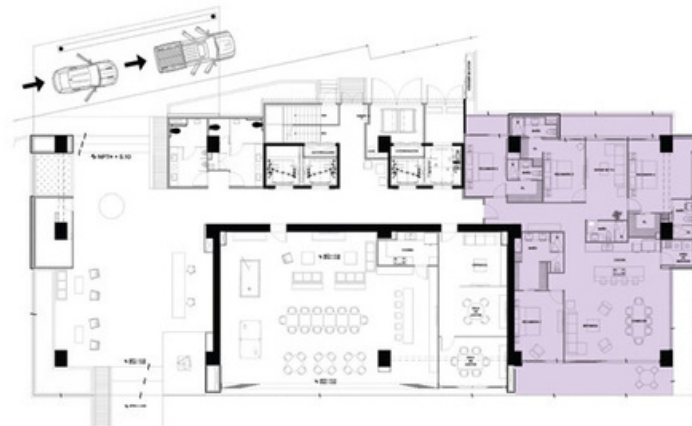
# UNIT TYPE C

LEVEL 1

 4+FR

 5

 293.71 m<sup>2</sup> | 3,161.468 ft<sup>2</sup>



\*The developer reserves the right to modify colors, materials, features, amenities, floor plans, prices, conditions and services at any time without notice. The areas of the apartments are taken along the axis of the wall between contiguous apartments, and the entire wall towards common areas.



## LEVELS 1-19

### TYPE A



135.40 m<sup>2</sup> | 1,672.711 ft<sup>2</sup>

### TYPE B



108.96 m<sup>2</sup> | 1,297.374 ft<sup>2</sup>

### TYPE D



120.53 m<sup>2</sup> | 1,319.332 ft<sup>2</sup>

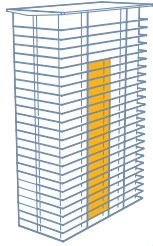
### TYPE E



162.29 m<sup>2</sup> | 1,729.545 ft<sup>2</sup>



\*The developer reserves the right to modify colors, materials, features, amenities, floor plans, prices, conditions and services at any time without notice. The areas of the apartments are taken along the axis of the wall between contiguous apartments, and the entire wall towards common areas.



# UNIT TYPE A

LEVELS 1-19



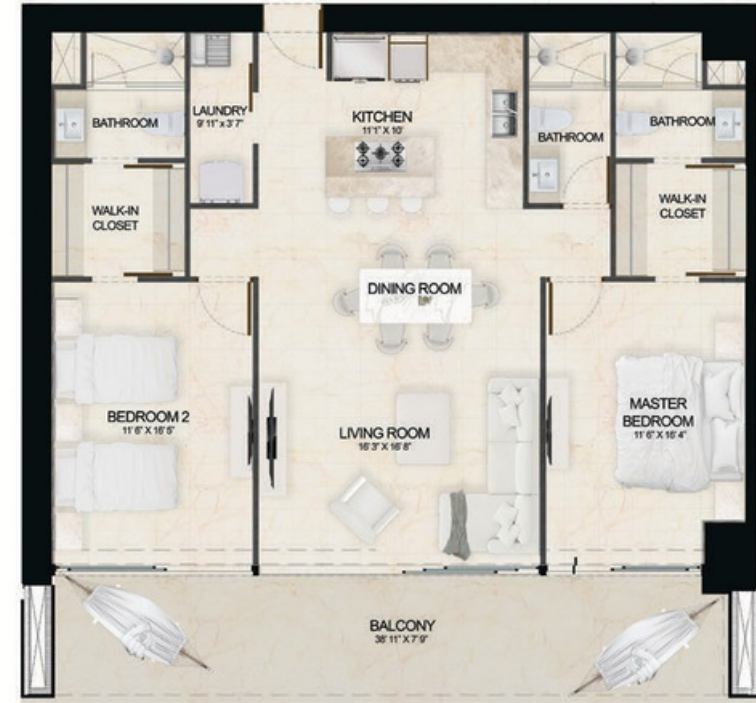
2



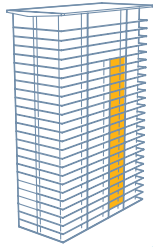
2.5



155.40 m2 | 1,672.711 ft2



\*The developer reserves the right to modify colors, materials, features, amenities, floor plans, prices, conditions and services at any time without notice. The areas of the apartments are taken along the axis of the wall between contiguous apartments, and the entire wall towards common areas.



# UNIT TYPE B

LEVELS 1-19



1



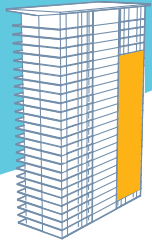
2



108.96 m2 | 1,297.374 ft2



\*The developer reserves the right to modify colors, materials, features, amenities, floor plans, prices, conditions and services at any time without notice. The areas of the apartments are taken along the axis of the wall between contiguous apartments, and the entire wall towards common areas.



# UNIT TYPE D-1

LEVELS 1-19



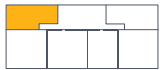
2



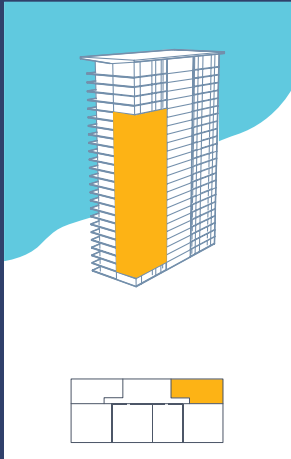
2



120.53 m<sup>2</sup> | 1,319.332 ft<sup>2</sup>



\*The developer reserves the right to modify colors, materials, features, amenities, floor plans, prices, conditions and services at any time without notice. The areas of the apartments are taken along the axis of the wall between contiguous apartments, and the entire wall towards common areas.



# UNIT TYPE D-r

LEVELS 1-19



2



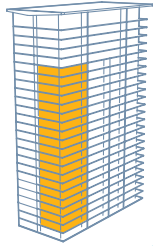
2



120.53 m2 | 1,319.332 ft2



\*The developer reserves the right to modify colors, materials, features, amenities, floor plans, prices, conditions and services at any time without notice. The areas of the apartments are taken along the axis of the wall between contiguous apartments, and the entire wall towards common areas.



# UNIT TYPE E-1

LEVELS 1-19



2



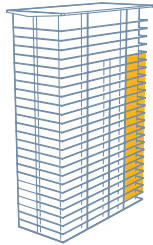
2.5



162.29 m2 | 1,729.545 ft2



\*The developer reserves the right to modify colors, materials, features, amenities, floor plans, prices, conditions and services at any time without notice. The areas of the apartments are taken along the axis of the wall between contiguous apartments, and the entire wall towards common areas.



# UNIT TYPE E-r

LEVELS 1-19



2



2.5



162.29 m<sup>2</sup> | 1,729.545 ft<sup>2</sup>



\*The developer reserves the right to modify colors, materials, features, amenities, floor plans, prices, conditions and services at any time without notice. The areas of the apartments are taken along the axis of the wall between contiguous apartments, and the entire wall towards common areas.

## LEVELS 20-24

### TYPE C



3.71 m<sup>2</sup> | 3,161.468 ft<sup>2</sup>

### TYPE F

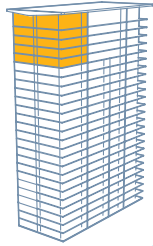


1.43 m<sup>2</sup> | 2,791.943 ft<sup>2</sup>



\*The developer reserves the right to modify colors, materials, features, amenities, floor plans, prices, conditions and services at any time without notice. The areas of the apartments are taken along the axis of the wall between contiguous apartments, and the entire wall towards common areas.





# UNIT TYPE C-1

LEVELS 20-24

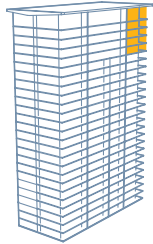
 4 + FR

 5

 293.71 m<sup>2</sup> | 3,161.468 ft<sup>2</sup>



\*The developer reserves the right to modify colors, materials, features, amenities, floor plans, prices, conditions and services at any time without notice. The areas of the apartments are taken along the axis of the wall between contiguous apartments, and the entire wall towards common areas.



# UNIT TYPE C-r

LEVELS 20-24

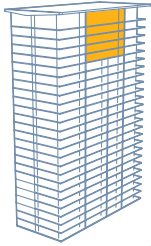
 4 + FR

 5

 293.71 m<sup>2</sup> | 3,161.468 ft<sup>2</sup>



\*The developer reserves the right to modify colors, materials, features, amenities, floor plans, prices, conditions and services at any time without notice. The areas of the apartments are taken along the axis of the wall between contiguous apartments, and the entire wall towards common areas.



# UNIT TYPE

**F**

LEVELS 20F-21

3

261.43 m<sup>2</sup> | 2,791.943 ft<sup>2</sup>



\*The developer reserves the right to modify colors, materials, features, amenities, floor plans, prices, conditions and services at any time without notice. The areas of the apartments are taken along the axis of the wall between contiguous apartments, and the entire wall towards common areas.

**TOWER C**

**TOWER B**

**TOWER A**



**MARINATOWERS®**

*Nautical High Life*

- A Tower A
- B Tower B
- C Tower C
- D Fire Pit
- E Jacuzzi
- F Infinity Pool
- G Gym
- H Restaurant
- I Yacht club / Beach club
- J Beach
- K Spa
- L Dock / Water Taxi Service
- M Paddle Courts
- N Pickleball Courts
- O Pool Bar
- P Coworking
- Q Movie Theater
- R Kids Playroom
- S Special Events Location for Owners Pet Park
- T Yoga / Meditation Area
- U Parking for Visitors
- V



# AMENITIES

\*The developer reserves the right to modify colors, materials, features, amenities, floor plans, prices, conditions and services at any time with out notice.



# MARINATOWERS®

*Nautical High Life*

DEVELOPED BY



DNTVTA



GONBAR



[delmuro.mx](http://delmuro.mx)

[gonbar.com](http://gonbar.com)

[sbrealtors.mx](http://sbrealtors.mx)



Contact us to learn more about Marina Towers, including available pricing and payment plans.

**MARINA VALLARTA**

Paseo de la Marina 161 Las Palmas 1, local 2.

**DOWNTOWN PUERTO VALLARTA**

Pino Suarez 203, Colonia Emiliano Zapata.

+ (52) 322 222 2233

[info@exoticrealty.com](mailto:info@exoticrealty.com)